



Light Car Club of Canberra Blue Range Rallysprint – Service Instruction

Saturday March 6th, 2021

Motorsport Australia Permit Number 121/0603/01



Blue Range Rallysprint – Service Instructions

| | |
|--|---|
| 1. COVID-19 Statement..... | 3 |
| 2. The Event | 4 |
| 3. Directions to Service Park..... | 4 |
| 4. Service Area..... | 5 |
| 5. Rally Headquarters & Documentation..... | 5 |
| 6. Rally Command..... | 6 |
| 7. Imposed Speed Limit | 6 |
| 8. Refuelling..... | 6 |
| 9. Food & Drinks | 6 |
| 10. Post Event Celebrations | 7 |
| 11. Disclaimer | 8 |



Blue Range Rallysprint – Service Instructions

1. COVID-19 Statement

The concessions and restrictions placed by the ACT Government on movement and activities during the COVID-19 Pandemic are extremely fluid in nature. There is a strong possibility the measures needed to be taken by individuals and organisations may be significantly different between the date these Supplementary Regulations are published and the date of the event. It is therefore necessary the Event Website, Event Facebook Page are monitored for Bulletins and variations to the Supplementary Regulations prior to the event.

Under no circumstances should anyone with symptoms consistent with COVID-19 attend the event. This includes any fever, respiratory symptoms, shortness of breath, sore throat, cough, fatigue, or lack of sense of smell.

Under no circumstances should anyone attend the event if they have been;

- overseas in the previous 14 days; or
- in contact with someone who has been overseas in the previous 14 days; or
- in contact with, or close contact of a known COVID-19 positive case in the previous 14 days; or
- in a known COVID-19 hotspot (refer ACT Public Health Directions; ACT Government Travel Advice; NSW Government heat maps; NSW Government latest news and updates) in the previous 14 days; or
- directed to self-isolate by medical professional or Government Agency

It is highly recommended that if any participant exhibits symptoms consistent with COVID-19 prior to the event then the individual should take a COVID-19 test through ACT Health or their regular Doctor.

Motorsport Australia strongly encourages the use of the Australian Government's 'COVIDSafe App' for all event participants.

Many administrative and operational processes for the event may be very different to what has been normally experienced in the past. This may result in some activities taking longer than expected. Please allow additional time and tolerance during this difficult period so we can all participate and be involved in the sport we love. Please do read these Supplementary Regulations closely and in the lead up monitor for any applicable changes that may be made to the event as they become available.

Social distancing and other COVID-19 practices must be observed at all times.



Blue Range Rallysprint – Service Instructions

2. The Event

The Event will be known as the Blue Range Rallysprint and will be a S2 Multi Club Rallysprint. The event will be held within in Uriarra Forest ACT on closed public roads.

The Sunday Drivers component of the event will be conducted on public roads in the ACT and NSW.

The Blue Range Rallysprint is Round 1 of the 2021 ACT Regional Rally Series.

Cars will complete 4 runs for a distance of approximately 68.4kms (approx.). There will be a 2min gap between competitive cars.

3. Directions to Service Park

From the Brindabella Rd and Uriarra Rd intersection:

1. Head south on Brindabella Rd for approximately 5.1kms
2. Turn right onto Blue Range Rd (Look for the 'Rally Action' sign).
3. Travel on Blue Range Rd for approximately 1.8kms.



Blue Range Rallysprint – Service Instructions

4. Service Area

Service Park is on Blue Range Rd as per the below illustration. Servicing is strictly restricted to this area and will be clearly identifiable on the day.

There is minimal time allowed between runs.

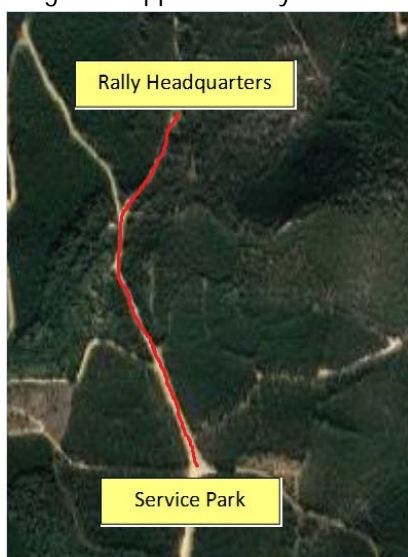
NOTE: Service Park will be two-way traffic, so please allow enough room for cars to pass.

Children must be supervised at ALL TIMES.



5. Rally Headquarters & Documentation

Rally Headquarters will be located at Blue Range Hut approximately 800m from Service Park on Blue Range Rd. Documentation will be located at Blue Range Hut approximately 800m from Service Park on Blue Range Rd.





Blue Range Rallysprint – Service Instructions

6. Rally Command

Rally Command will be located approximately 400m East of service park and should only be accessed by event officials. Unless crucial, all matters are to be channelled through Rally Headquarters located at Blue Range Hut.



7. Imposed Speed Limit

The speed of all vehicles between Service Park (inclusive) and the Spectator Point must not exceed **20 km/h**. Failure to comply with this limit shall result in a report to the Stewards where a penalty may be applied to your crew.

The speed limit in all other areas of the forest is per the ACT Forestry limit of 40 km/h.

8. Refuelling

Refuelling is allowed only in the Service Park, in the designated Refuel Area (refer to Service Park map).

- The Organisers recommend that all Service Personnel wear neck to wrist to ankle fireproof clothing, balaclava and fireproof gloves during refuelling.
- No servicing is allowed within the designated Refuel Area.

9. Food & Drinks

Smoking Pig and Fig will be running a BBQ at the event.

The BBQ will be located within Service Park.



Blue Range Rallysprint – Service Instructions

10. Post Event Celebrations

The event has secured Blue Range Hut for the weekend allowing people camp overnight subject to ACT Covid 19 restrictions.

This will be a great opportunity to wind down and exchange stories following the event.

All are encouraged to join us from competitors to our valued officials

Facilities at the Hut include:

- Wheelchair access
- Toilets
- Wood and gas barbecues
- Shelter
- Picnic tables
- On-leash dog exercise area
- Campground
- Walking trail

For more information on Blue Range Hut please follow the link provided below:

<https://www.environment.act.gov.au/.../mur.../blue-range-hut>



Blue Range Rallysprint – Service Instructions

11. Disclaimer

Risk Warning and Disclaimer

RISK WARNING AND ASSUMPTION OF RISK

Motorsport Activities are inherently dangerous recreational activities and there is significant risk of injury, disability or death. If you do not wish to be exposed to such risks, then you should not participate in the Motorsport Activities.

I acknowledge that the risks associated with attending or participating in Motorsport Activities include but are **NOT LIMITED** to the risk that I may suffer harm as a result of:

- motor vehicles (or parts of them) colliding with other motor vehicles or persons or property;
- other participants acting dangerously or with lack of skills;
- high levels of noise exposure;
- acts of violence and other harmful acts (whether intentional or inadvertent) committed by persons attending or participating in the event; and
- the failure or unsuitability of facilities (including grand-stands, fences and guard rails) to ensure my safety.

EXCLUSION OF LIABILITY, RELEASE & INDEMNITY

In exchange for being able to attend or participate in the Motorsport Activities, I agree:

- to release Motorsport Australia and the Entities to the extent that any or all of them are providing Recreational Services from all liability for:
 - my death;
 - any physical or mental injury (including the aggravation, acceleration or recurrence of such an injury);
 - the contraction, aggravation or acceleration of a disease;
 - the coming into existence, the aggravation, acceleration or recurrence of any other condition, circumstance, occurrence, activity, form of behaviour, course of conduct or state of affairs:
 - that is or may be harmful or disadvantageous to me or the community; or
 - that may result in harm or disadvantage to me or the community,howsoever arising from my participation in or attendance at the Motorsport Activities;
- to indemnify and hold harmless and keep indemnified Motorsport Australia and the Entities to the maximum extent permitted by law in respect of any Claim by any person; and
- to attend at or participate in the Motorsport Activities at my own risk.

I understand that:

- nothing in this document excludes, restricts or modifies any rights that I may have as a result of significant personal injury that is caused by the Reckless Conduct of Motorsport Australia and the Entities as the supplier of the Motorsport Activities and Recreational Services;
- nothing in this document prevents Motorsport Australia and the Entities from relying on any laws (including statute and common law) that limit or preclude their liability;



Blue Range Rallysprint – Service Instructions

nothing in this document excludes any term or guarantee which under statute cannot be excluded, however the liability of Motorsport Australia and the Entities is limited to the minimum liability allowable by law;

- nothing in this document precludes me from making a claim under a Motorsport Australia insurance policy where I am expressly entitled to make a claim under that insurance policy; and
Motorsport Australia has arranged for limited personal injury insurance coverage which may provide me with some protection for loss, damage or injury that I may suffer during my participation in the Motorsport Activities. I acknowledge and accept that the insurance taken out by Motorsport Australia may not provide me with full indemnity for loss, damage or injury
that I may suffer during my participation in the Motorsport Activities, and that I may have to pay the excess if a Claim is made under an insurance policy on my behalf. I agree that my own insurance arrangements are ultimately my responsibility and I will arrange any additional coverage at my expense after taking into account Motorsport Australia's insurance arrangements, this document and my own circumstances.

Where Motorsport Activities are held in the following jurisdictions, I acknowledge that I have also read and accept the following warnings:

WARNING APPLICABLE IN RELATION TO MOTORSPORT ACTIVITIES HELD IN VICTORIA

WARNING UNDER THE AUSTRALIAN CONSUMER LAW AND FAIR TRADING ACT 2012:

Under the Australian Consumer Law (Victoria), several statutory guarantees apply to the supply of certain goods and services. These guarantees mean that the supplier named on this form is required to ensure that the recreational services it supplies to you:

- are rendered with due care and skill;
- are reasonably fit for any purpose which you either expressly or by implication, make known to the supplier; and
- might reasonably be expected to achieve any result you have made known to the supplier.

Under section 22 of the **Australian Consumer Law and Fair Trading Act 2012 (Vic)**, the supplier is entitled to ask you to agree that these conditions do not apply to you. If you sign this form, you will be agreeing that your rights to sue the supplier under the **Australian Consumer Law and Fair Trading Act 2012** if you are killed or injured because the services were not in accordance with these guarantees, are excluded, restricted or modified in the way set out in this form.

NOTE: The change to your rights, as set out in this form, does not apply if your death or injury is due to gross negligence on the supplier's part. "Gross negligence" in relation to an act or omission, means doing the act or omitting to do an act with reckless disregard, with or without consciousness, for the consequences of the act or omission. See regulation 5 of the **Australian Consumer Law and Fair Trading Regulations 2012** and section 22(3)(b) of the **Australian Consumer Law and Fair Trading Act 2012**.

WARNING APPLICABLE IN RELATION TO MOTOR SPORT ACTIVITIES HELD IN SOUTH AUSTRALIA

Your rights:

Under sections 60 and 61 of the Australian Consumer Law (SA), if a person in trade or commerce supplies you with services (including recreational services), there is:

- a statutory guarantee that those services will be rendered with due care and skill;
- a statutory guarantee that those services, and any product resulting from those services, will be reasonably fit for the purpose for which the services are being acquired (as long as that purpose is made known to the supplier); and



Blue Range Rallysprint – Service Instructions

a statutory guarantee that those services, and any product resulting from those services, will be of such a nature, and quality, state or condition, that they might reasonably be expected to achieve the result that the consumer wishes to achieve (as long as that wish is made known to the supplier or a person with whom negotiations have been conducted in relation to the acquisition of the services.

Excluding, Restricting or Modifying Your Rights:

Under section 42 of the **Fair Trading Act 1987 (SA)**, the supplier of recreational services is entitled to ask you to agree to exclude, restrict or modify his or her liability for any personal injury suffered by you or another person for whom or on whose behalf you are acquiring the services (a third party consumer). If you sign this form, you will be agreeing to exclude, restrict or modify the supplier's liability with the result that compensation may not be payable if you or the third party consumer suffer personal injury.

Important:

You do not have to agree to exclude, restrict or modify your rights by signing this form. The supplier may refuse to provide you with the services if you do not agree to exclude, restrict or modify your rights by signing this form. Even if you sign this form, you may still have further legal rights against the supplier. A child under the age of 18 cannot legally agree to exclude, restrict or modify his or her rights. A parent or guardian of a child who acquires recreational services for the child cannot legally agree to exclude, restrict or modify the child's rights.

Agreement to exclude, restrict or modify your rights:

I agree that the liability of Motorsport Australia and the Entities for any personal injury that may result from the supply of the recreational services that may be suffered by me (or a person for whom or on whose behalf I am acquiring the services) is excluded.

Further information about your rights can be found at www.cbs.sa.gov.au

DEFINITIONS

- a. "Claim" means and includes any action, suit, proceeding, claim, demand or cause of action however arising including but not limited to negligence, BUT does NOT include a claim under a Motorsport Australia insurance policy by any person expressly entitled to make a claim under that insurance policy;
- b. "Entities" means event and competition organisers/promoters/managers, land and track owners/managers/administrators/lessees, Motorsport Australia affiliated clubs, state and

territory governments and insureds listed in Motorsport Australia's public/product/professional indemnity insurance policies and each of their related bodies corporate (including their related bodies corporate) and each of their organs and agencies, officers/president/directors/executives, employees, servants, agents, partners, providers, members, competitors, drivers, co-drivers, navigators, officials, crew members, pit crew, delegates, licence holders, representatives, commissions, committees, advisers, trustees, councils, panels, shareholders, volunteers, officials, appointees, delegated bodies and sponsors;

- c. "Motorsport Activities" means any motorsport activities or Recreational Services which are permitted or approved which Motorsport Australia regulates or administers or otherwise are

under the responsibility / control of Motorsport Australia;

- d. "Motorsport Australia" means the Confederation of Australia Motor Sport Ltd. trading as Motorsport Australia;
- e. "Reckless Conduct" means conduct where the supplier of the recreational services is aware, or should reasonably have been aware, of a significant risk that the conduct could result in

personal injury to another person and engages in the conduct despite the risk and without adequate justification;

- f. "Recreational Services" means (unless otherwise defined in this document) services that consist of participation in:



Blue Range Rallysprint – Service Instructions

- (i) a sporting activity; or
- (ii) a similar leisure time pursuit or any other activity that:
 - (i) involves a significant degree of physical exertion or physical risk; and
 - (ii) is undertaken for the purposes of recreation, enjoyment or leisure